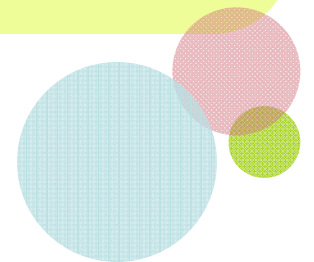




FAMILY ENGAGEMENT:

**Parent Partnerships, Parent Connectivity,
and Training & Capacity Building**

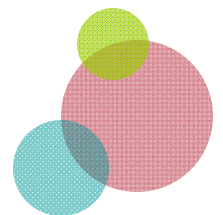




The Family Engagement Initiative

Create a strong, family-centric, family engagement system to serve as a springboard for deeper systems coordination and improvement among and between sectors by:

- Funding direct services
- Funding systems-level supports
- Co-leading a FE Network Partnership



FE PROVIDER LEARNING COMMUNITY

Assess FE Training Needs

FE Training

Child Dev. Trainings

F5SMC

SMCOE

FC

SV

FE Network Convening's

service mapping

peer support

networking

cross-pollination of ideas

joint problem solving



San Mateo County Office of Education

- **Recommended 2-Year Funding Amount:** \$460,000
- **Services:** Augment the FE work already being conducted in Big Lift communities by providing expansion of Parent Cafes, implementation of Friday Cafes, creating a “Leadership Pathway” for FE professionals
- **Numbers served:** 56 parent leaders
200 providers (approximate)
Parent Café Parents TBD
- **Program Highlight:**
 - Become a systems-level Core FE partner with F5SMC
 - Deeper FE work in Big Lift Communities
 - intentional inclusion of 0-3 families and providers county-wide
- **Partners include:** Family Connections & PCRC



Family Connections

- **Recommended 2-Year Funding Amount:** \$300,000
- **Services:** professional development for Puente & FC and deeper programmatic evaluation, Parent Cafes, parent support groups/workshops, pilot FC's model in Pescadero via Puente de la Costa Sur's new center.
- **Numbers served:** South County -- 100 children, 160 parents
Coast side Pilot – 20 children, 26 parents
Workshops, Parent Groups & Parent Café targets TBD
- **Program Highlight:**
 - Provides TA to Puente to pilot the program coast side
 - Investigates the scalability of the model for wider implementation
 - Become a systems-level Core FE partner with F5SMC
- **Partners Include:** Puente de la Costa Sur



StarVista

- **Recommended 2-Year Funding Amount:** \$200,000
- **Services:** recertification of StarVista Staff as PAT trainers, StarVista become a PAT affiliate, parent groups and workshops, training on PAT for service providers county-wide as part of the FE Initiative.
- **Numbers served: 600 parents (loose estimate),**
Provider target numbers TBD
Children target numbers TBD
- **Program Highlights:**
 - Evidenced Based curriculum
 - Become a systems-level Core FE partner with F5SMC
 - Potentially leverages funding to underwrite other components of PAT



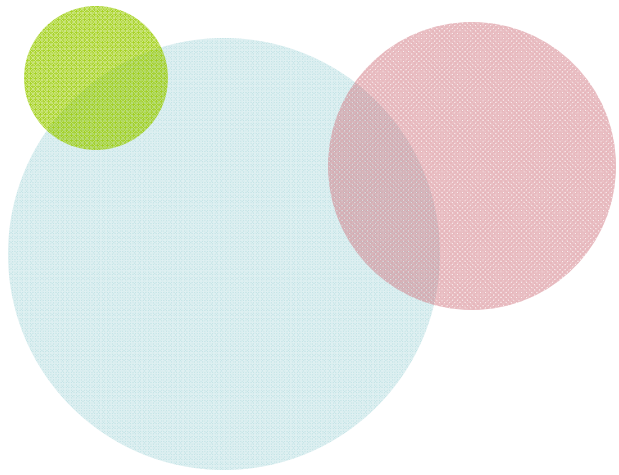
Gatepath

- **Recommended 2-Year Funding Amount:** \$90,000
- **Services:** English/Spanish peer-led parent support groups, father support group, parent trainings classes/workshops, bilingual warm-line and bilingual in-person support, professional development
- **Numbers served:** 415 children
570 families
Providers TBD
- **Program Highlights:**
 - Merges the former WMG program w/ Gatepath's FRC for more seamless service delivery
 - Addresses specific barriers to fathers engaging w/ special needs children
 - Addresses the intensified social isolation experienced by parents of children with disabilities

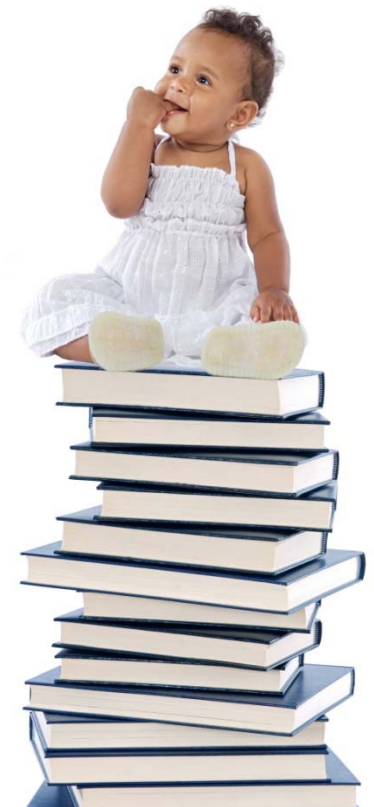
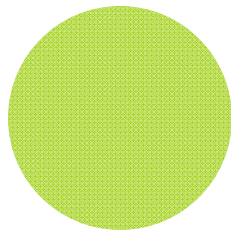


RWC2020

- **Recommended 2-Year Funding Amount:** \$50,000
- **Services:** Trains parent leaders to become members of the Community Mobilization Team (CMT), educates/trains local providers, engages CMT members to outreach and connect to parent who are eligible for core services but who have not yet accessed them, connects parents to receive core family support services.
- **Numbers served:** 4,000 families
80 parent leads
50 providers
- **Program Highlights:**
 - Utilizes a dual-capacity building approach for families and providers
 - Leverages momentum of three FE efforts currently underway in the region



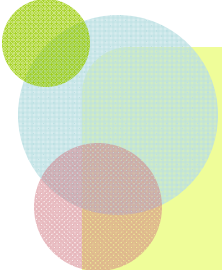
Questions?





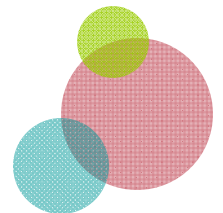
CHILD HEALTH & DEVELOPMENT

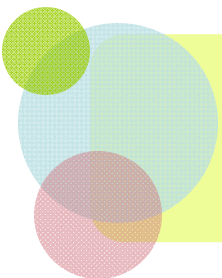




Safe, Healthy, and Equitable Communities Initiative

- **Objectives:**
 - 1) Support parents to better understand and articulate the impact of policy decisions on young children and their families;
 - 2) Increase the voice of underrepresented communities in policy decisions/advocacy efforts, and;
 - 3) Increase the skill set of individuals to give voice to issues that impact them and the communities they represent.
- **Pilot Project Target Population/ Geographic Area:** Low-income families and families of color in the target area of Daly City.
- **Two-Year Funding Total = \$150,000**





Faith In Action

Parent Leadership, Civic Engagement, and Capacity Building Consultation Services

Recommended 2-year Amount: \$75,000

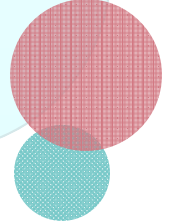
- **Services Include:**
 - Development and facilitation of the parent training curriculum,
 - Supporting the development of institutional knowledge and capacity building for the Community Host Agency
 - Sustained support of the project via technical assistance to the Community Host Agency and parent participants,
 - **Target Service Numbers:** 24 parents, 20 providers
- 

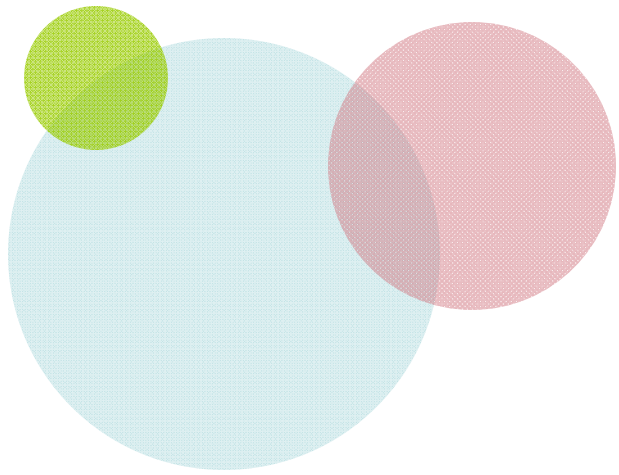


Daly City Partnership:

Daly City Community Host Agency

Recommended 2-Year Amount: \$75,000

- **Services:** Serve as the “anchor point” within Daly City to:
 - Staff a project coordinator/liaison to serve as the point person for ongoing project management and parent support,
 - Recruit and retain parent participants,
 - Embed the program, its core components, and the parent cohort within the context of the larger agency and community,
 - Coordinate all meeting and training logistics
 - **Target Service Numbers:** 24 parents, 20 providers
- 



Questions?

